

HOW TO STRUCTURE AN ONLINE COURSE



MODULE DESIGN

Reflect and plan: review resources, engage in training, troubleshoot issues

Implement the plan: refine module descriptors, develop content

Establish and identify teaching and learning supports

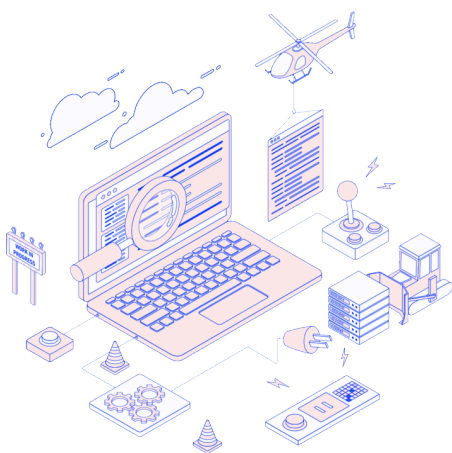
MAP THE STUDENT EXPERIENCE

Use a range of **diverse learning tools**
Ensure learner engagement by creating an online student community

Use **instructional documents** to ensure understanding



IDENTIFY TECHNOLOGIES



Review, test, evaluate and implement a range of **interactive and innovative technologies** to support teaching and learning

EVALUATE

Develop **checklists** for the design, development and refinement of courses
Use **Rubrics** to carry out self assessments
Conduct continuous **peer and student evaluations**



For more information see <https://www.digitaled.ie/>